

W&H PEACOCK  
AUCTIONEERS & VALUERS

# Mid Century Design

Bedford Auction Centre  
Friday 17th May | Commencing at 10.30am

Viewing: Friday 10th May 9am to 8pm  
Saturday 11th May 9am to 5pm  
Thursday 16th May 9am to 5pm  
and Morning of Sale from 9am  
[www.peacockauction.co.uk](http://www.peacockauction.co.uk)

1 Philippe Starck for Alessi, a 'Dede' doorstop, h. 16 cm, together with an Alessi 'Chip' magnetic paperclip holder, an Alessi envelope holder and a further container (4)

**Est £30 - £50**

4 Lluís Clotet for Alessi, a 'Sarria' red tray in the form of crumpled paper, di. 27 cm

**Est £20 - £30**



5 Micheal Graves for Alessi, a 'Bird Kettle' with white mounts, together with another 'Bird Kettle' and a similar jug (3)

**Est £80 - £120**

2 Philippe Starck for Alessi, a 'Juicy Salif' citrus juicer

**Est £20 - £30**

3 Humberto Campana and Fernando Campana for Alessi, a 'Blow Up' citrus basket, h. 26 cm

**Est £30 - £50**



6 A group of Alessi kitchen items including two timers, a 'Sweetheart' crocodile nutcracker, a 'Kalisto' storage jar, a 370 citrus basket etc. (7)

**Est £50 - £70**

7 Carlo Mazzeri for Alessi, a Model 872 stainless steel champagne or wine bucket, together with a smaller cooler by the same designer (2)

**Est £50 - £70**

8 A group of Alessi plastics including a 'Bunny and Rabbit' roll holder, a spaghetti holder, a pair of egg cups and spoons, a pair of 'Secret Fish' containers and a pair of Christmas tree ornaments (8)

**Est £60 - £80**

9 Alessandro Mendini for Alessi, a group of 'Anna G' and 'Sandro' corkscrews/bottle openers together with two Bugatti corkscrews (13)

**Est £50 - £80**

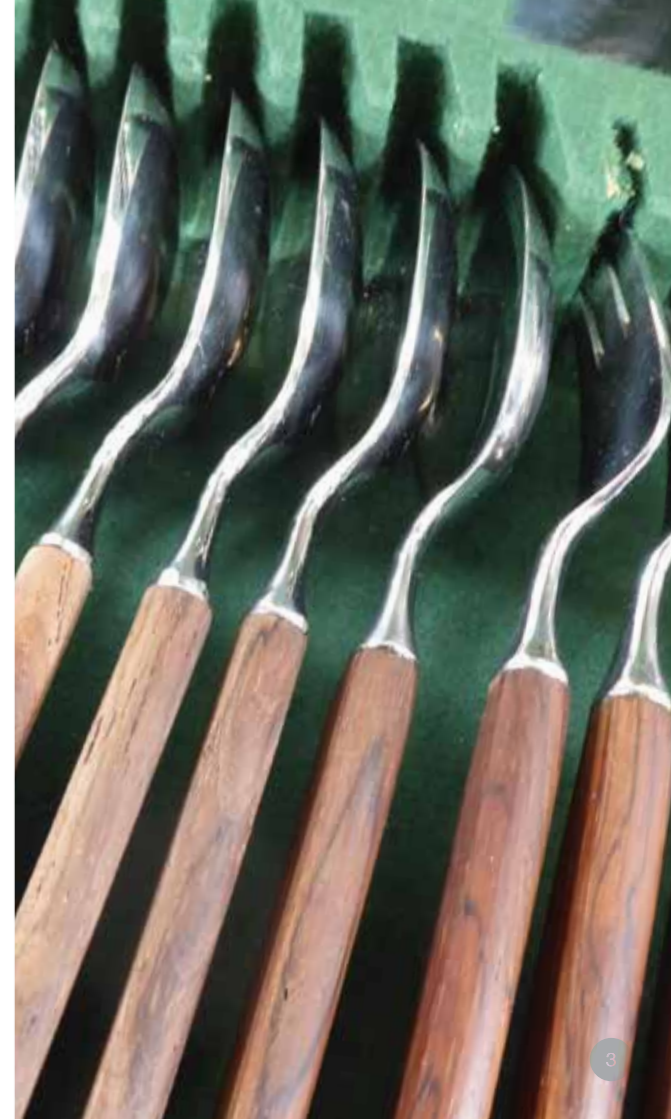


10 Sketch Inc for Lucie Kaas, three wooden figures, together with a group of Umbra wall climbing and freestanding figures (11)

**Est £30 - £50**

11 A late 1950's eight-sitting set of Danish cutlery with rosewood handles and stainless steel blades by Dansk Kniv Fabrik UK CITES Article 10 Transaction Specific Ref. 24GBA102ULDY8

**Est £200 - £300**





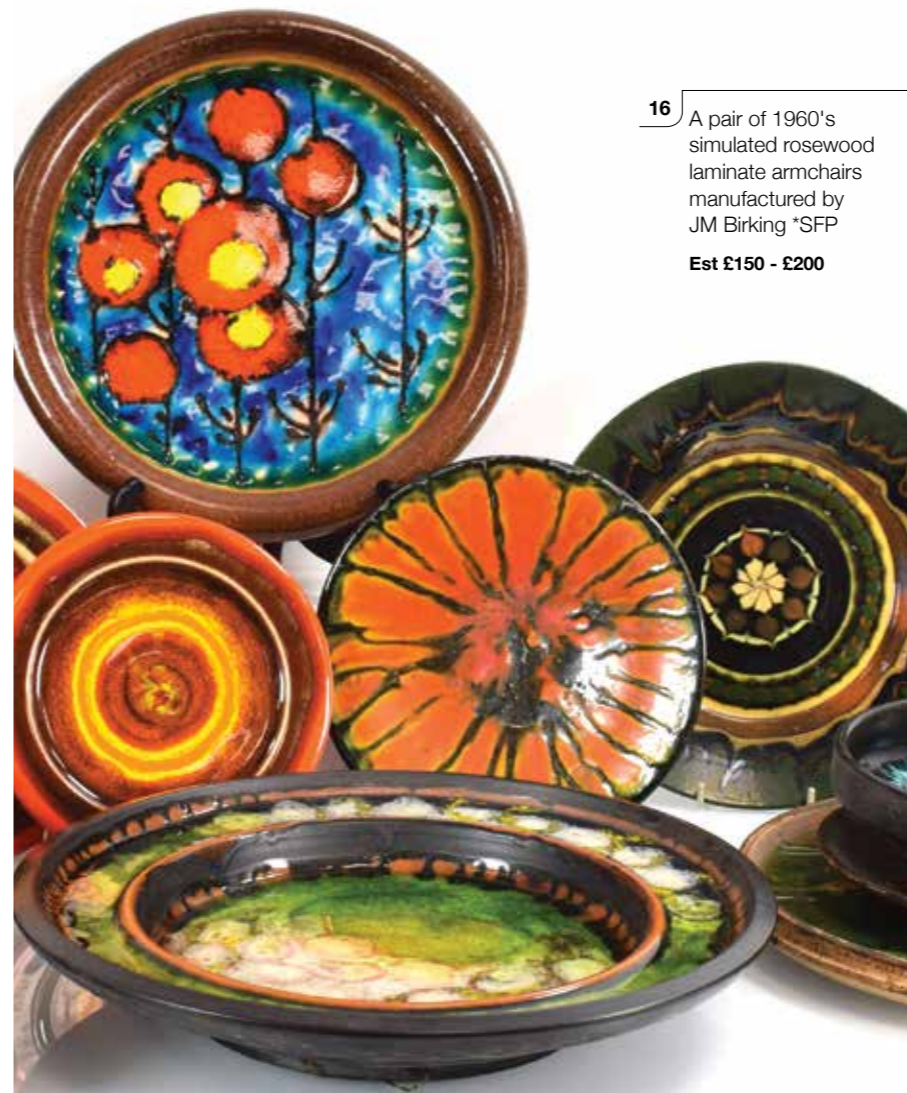
- 12 Roberto Rigon for Bertoncello, a group of Italian sculptural vases (10)  
**Est £100 - £200**



- 14 Rodolfo Dordoni for Matteo Grassi, an Italian '2 Leather' swivel armchair in cream/cappuccino leather on a four-star base \*SFP  
**Est £200 - £300**

- 13 A group of 1960's German, Hungarian and other chargers and bowls decorated in bright glazes, including Hutschenreuther, Eva Kondor etc. (Qty)  
**Est £80 - £120**

- 15 Rodolfo Dordoni for Matteo Grassi, an Italian '2 Leather' swivel armchair in cream/cappuccino leather on a four-star base \*SFP  
**Est £200 - £300**



- 16 A pair of 1960's simulated rosewood laminate armchairs manufactured by JM Birking \*SFP  
**Est £150 - £200**



- 17 In the manner of Eero Saarinen/Arkana, a 1970's white laminate table of oval form resting on a circular column and stainless tulip-style base, 162 x 100 cm  
**Est £60 - £100**

- 18 A 1960/70's fibreglass table, the white surface resting on an hour-glass shape base, di. 120 cm  
**Est £40 - £60**

- 19 Jasper Morrison for Cappellini, a 'Plan' Range pink lacquered single-door cabinet with stainless handles and feet, designed in 1999, 60 x 60 cm, h. 71 cm  
**Est £200 - £300**

- 20 After Ludwig Mies van der Rohe, a 'Barcelona'-style chair and stool upholstered in white \*SFP  
**Est £100 - £150**

21



21 Grete Jalk (1920-2006) for Poul Jeppesen, a 1960's Danish rosewood 'flip-top' drink's trolley with a removeable tray, 70 x 45-90 x 65 cm CITES Article 10 Transaction Specific Ref: 617822/01

**Est £100 - £150**

22

22 Stefano Bigi for Porada, an Italian 'Infinity' coffee table base in walnut, with the packing box

**Est £200 - £300**

23

23 A pair of British holophane industrial pendant light shades, di. 41 cm, h. 32 cm

**Est £40 - £60**

23



22



24 In the Hollywood Regency manner, a 1970's (?) Italian rectangular coffee table with brass classical legs and mounts, 103 x 53 x 46 cm

**Est £40 - £60**



25

25 A pair of 1970's brass side tables with later smoked glass surfaces, 50 x 40 x 47 cm (2)

**Est £50 - £80**

26

26 A 1980's brass finished coffee table with a rectangular smoked glass surface and reeded legs in the Hollywood Regency manner, 91 x 46 x 42 cm

**Est £50 - £80**

27

27 An Avalon teak modular shelving system including three uprights, a three-drawer sideboard, w. 163 cm, a matching cabinet, a single shelf, a bureau, w. 82 cm, and a matching glazed cabinet (Qty)

**Est £300 - £500**

28

28 A contemporary Italian wall hanging with black ash 'pebbles', labelled 'Inartemvertere by I. & S. Bellio AQUA N. 8/L', bar-to-base h. 184 cm, bar w. 74 cm

**Est £100 - £200**

27



29 A 1960's Danish teak sideboard cabinet, the four sliding doors enclosing an arrangement of shelves, on tapering legs, 200 x 41 x 116 cm

Est £300 - £400



32 A contemporary art glass celestial paperweight modelled as Saturn, di. 23 cm, together with a further cylindrical vase (2)

Est £30 - £50

30 A 1960's Danish teak chest of four drawers with organic handles, on later turned feet, 67 x 41 x 75 cm

Est £150 - £200

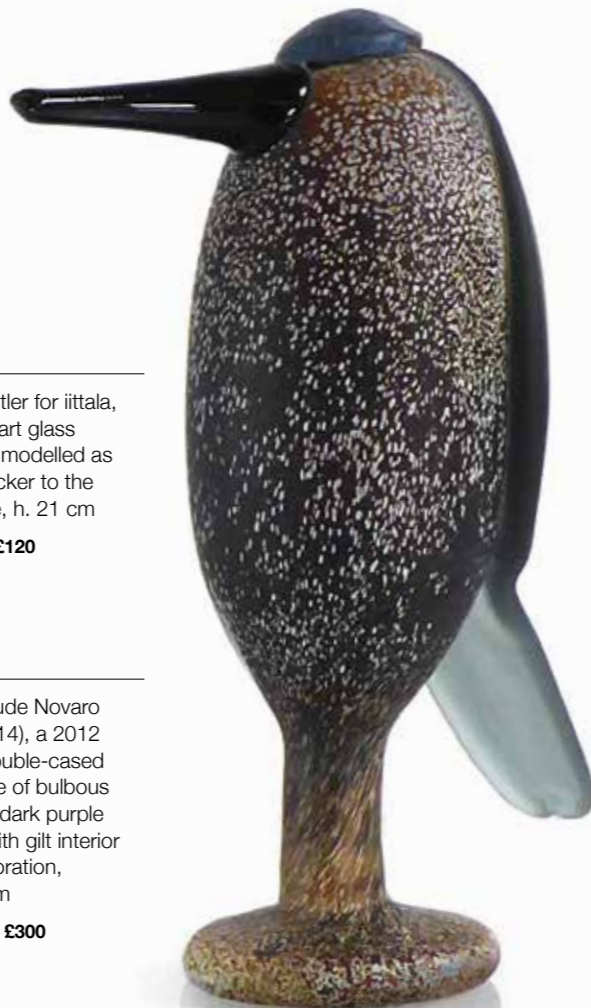


31 Toikka Butler for iittala, a Finnish art glass sculpture modelled as a bird, sticker to the underside, h. 21 cm

Est £80 - £120

33 Jean-Claude Novaro (1943-2014), a 2012 signed double-cased glass vase of bulbous form, the dark purple ground with gilt interior relief decoration, h. 20.5 cm

Est £200 - £300



34 A graduated set of three stoneware bottle vases, max h. 54 cm, together with two further similar glazed vases (5)

Est £60 - £80

37 A Liskeard Glass knobby glass vase in green attributed to Jim Dyer, h. 14 cm, a bowl in the manner of Josef Hospodka and a Murano-style bubble bowl (3)

Est £40 - £60

35 In the manner of Flavio Poli (1900-1980), a double-cased art glass vase in orange, h. 20 cm, together with a 1970/80's glass tealight holder (2)

Est £80 - £120

38 Attributed to Bo Borgstrom for Aseda Glasbruk, an undulating glass vase, h. 25 cm, together with a 1970's amber glass footed bowl, h. 10 cm, and an Orrefors bowl in red numbered 3032/1 (3)

Est £60 - £80



36 A Siddy Langley iridescent glass vase of ribbed form, signed and dated 2001, h. 19.5 cm

Est £50 - £80

39 Nils Landberg for Orrefors, a Dusk Series vase, signed and numbered 3538/4, h. 13 cm

Est £40 - £60



40 A set of ten Finnish Iittala 'Marimekko' votive holders in various colours and two sizes, h. 8 and 6 cm (10)

Est £30 - £50



- 41 A group of Finnish decorative objects by Iittala including a stainless steel tray, a pair of moulded candlesticks, a pair of glass containers, two graduated containers and four various glass bowls (11)

Est £40 - £60



- 42 A Swedish wool rya wall hanging, the yellow ground depicting a bright tree, 98 x 61 cm

Est £30 - £40

- 43 A 1960/70's teak cabinet with two glazed sliding doors, on later turned legs, 76 x 26 x 59 cm

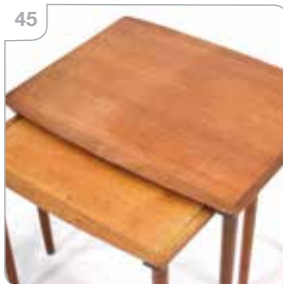
Est £60 - £100

- 44 A 1960/70's teak console or telephone table with two drawers, on canted legs, 80 x 20 x 53 cm

Est £80 - £120

- 45 A 1960's Danish nest of three teak and crossbanded occasional tables by Møbelintarsia, label to the underside, max. 57 x 44 cm

Est £60 - £80



- 46 A (?)Norwegian square coffee table in stained beech with undulating sides and circular supports, 53 x 53 cm

Est £60 - £80

- 47 A 1950's Danish teak tambour cabinet fitted with seven beech drawers on a plinth base, 45 x 35 x 108 cm

Est £150 - £200

- 48 A pair of 1950/60's solid teak three-drawer side cabinets with cardboard drawer liners and chunky handles, on later ebonised legs, 35 x 46 x 82 cm

Est £80 - £120

- 49 A pair of 1950/60's solid teak bedside cabinets with cardboard drawer liners and chunky handles, on later ebonised legs, 38 x 38 x 77 cm

Est £80 - £120

- 50 A 1950/60's solid teak dressing cabinet with two doors, two drawers and chunky handles, on later ebonised legs, 90 x 46 x 142 cm

Est £60 - £100

- 51 A 1960/70's Danish teak standard floor lamp with brass intersections

Est £40 - £60



- 53 A 1960/70's Danish teak sectional standard floor lamp on a cast metal three-way base

Est £50 - £70

- 52 A 1970's Danish brass-finished twin-spot standard lamp on a straight shaft

Est £50 - £70

- 54 A 1970's Danish brass-finished single-spot adjustable standard floor lamp

Est £40 - £60

55



55 A pair of late 20th century spun aluminium two-tier ceiling lights in the manner of Louis Poulsen (2)

**Est £80 - £120**

57

A Danish brass finished four-tier ceiling light in the manner of Louis Poulsen

**Est £60 - £80**

57



58



58 A pair of 1960's afromesia teak armchairs by Toothill, with cushions for reupholstery \*SFP

**Est £500 - £700**

56

A pair of 1970's Danish blue enamelled No. 4020 pendant lights by Lyfa (2)

**Est £60 - £80**

59

A 1960's afromesia teak three-seater sofa by Toothill, with cushions for reupholstery \*SFP

**Est £400 - £500**



60

EOOS for Walter Knoll, a set of six 'Jason' highback chairs in pale brown leather \*SFP

**Est £200 - £300**

63

A 1970's teak four-drawer chest on later slender legs, 102 x 45 x 60 cm

**Est £80 - £120**

64

A pair of 1970's teak single door bedside cabinets with circular handles and stainless decoration, on later ebonised legs, 40 x 30 x 62 cm

**Est £50 - £70**

61

A 1970's teak open-faced 'waterfall' bookcase on later tapering legs, 84 x 34 x 126 cm

**Est £80 - £120**

65



65

A 1970's Danish teak tambour music cabinet by Vantinge Mobelindustri, on later turned legs, stamped to the underside, 121 x 47 x 75 cm

**Est £150 - £200**

62

A 1960's Danish teak cabinet with two sliding doors enclosing a single shelf, on later turned legs, 80 x 39 x 73 cm

**Est £80 - £120**

66

A 1950/60's teak ottoman or storage trunk on later ebonised feet, 107 x 45 x 48 cm

**Est £40 - £60**

**67** A group of 1960/70's Danish teak modular 'PS Systems' shelving including a fall-front bureau, two glazed sliding cabinets, a solid sliding cabinet, seven various shelves, five uprights and various fittings (Qty)

**Est £300 - £400**

**68** A 1970's teak cabinet with two sliding doors on square legs, 89 x 40 x 43 cm

**Est £60 - £100**

**69** A Fyne Lady of Banbury afromesia tallboy or chest of five drawers on square straight supports, 63 x 51 x 108 cm

**Est £150 - £200**

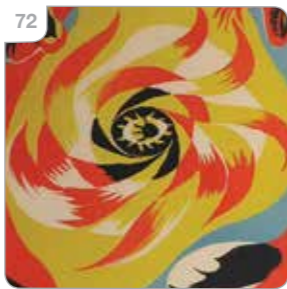


**70** A 1960's Swedish teak chest of five drawers on later tapering legs, 64 x 40 x 94 cm

**Est £150 - £200**

**71** After Fernand Leger (French, 1881-1955), 'Untitled', shapes on a turquoise ground, lithograph printed by Mourlot, Goldmark Gallery verso, image 30 x 25 cm

**Est £200 - £300**



**72** After Andre Masson (French, 1896-1987), 'Sun', lithograph printed by Mourlot, Goldmark Gallery verso, image 35 x 26 cm

**Est £40 - £60**



**73** After Patrick Hughes (b. 1939), 'Registered Rainbows', signed and dated '80, numbered 1/150, screenprint, Goldmark Gallery verso, image 72 x 61 cm

**Est £150 - £200**



**74** John Piper CH (1903-1992), East Barsham Manor (Levinson 320), signed and numbered 24/70, screenprint in colours, printed by Kelpra Studio, published by Marlborough Fine Art, image 54 x 76 cm  
\*Please note that Artist's Resale Rights may apply to this lot.

**Est £800 - £1200**



75



75

After Marc Chagall (French-Russian, 1887-1985), 'Bouquet', lithograph, image 69 x 56 cm

**Est £150 - £200**

77

Dunbar Marshall-Malagola RBA (1918-2001), 'Yellow Sky Concrete Mixer', signed Dunbar Marshall, dated '57 verso, oil on board, image 102 x 76 cm artist's details verso, exhibited at Bradford City Art Gallery

**Est £150 - £200**

78



78

LeRoy (French), A full length nude portrait of a seated lady in the Art Deco fashion, signed in ink and dated 'Paris 1953', screenprint, image c. 22 x 16 cm

**Est £50 - £80**

76

After Bjorn Wiinblad (Danish, 1918-2006), '1001 Nat Fischers Forlag' (Arabian Nights), lithographic poster, image 100 x 49 cm, together with another in the same series (2)

**Est £150 - £200**

77



76



79

A collection of four partial sets of children's/ schoolroom posters including: Boyce: Gay Way Series - Nursery Rhyme Pictures (1) MacMillan's Geography Pictures (2) Harvey's Nature (1)

**Est £200 - £300**

80

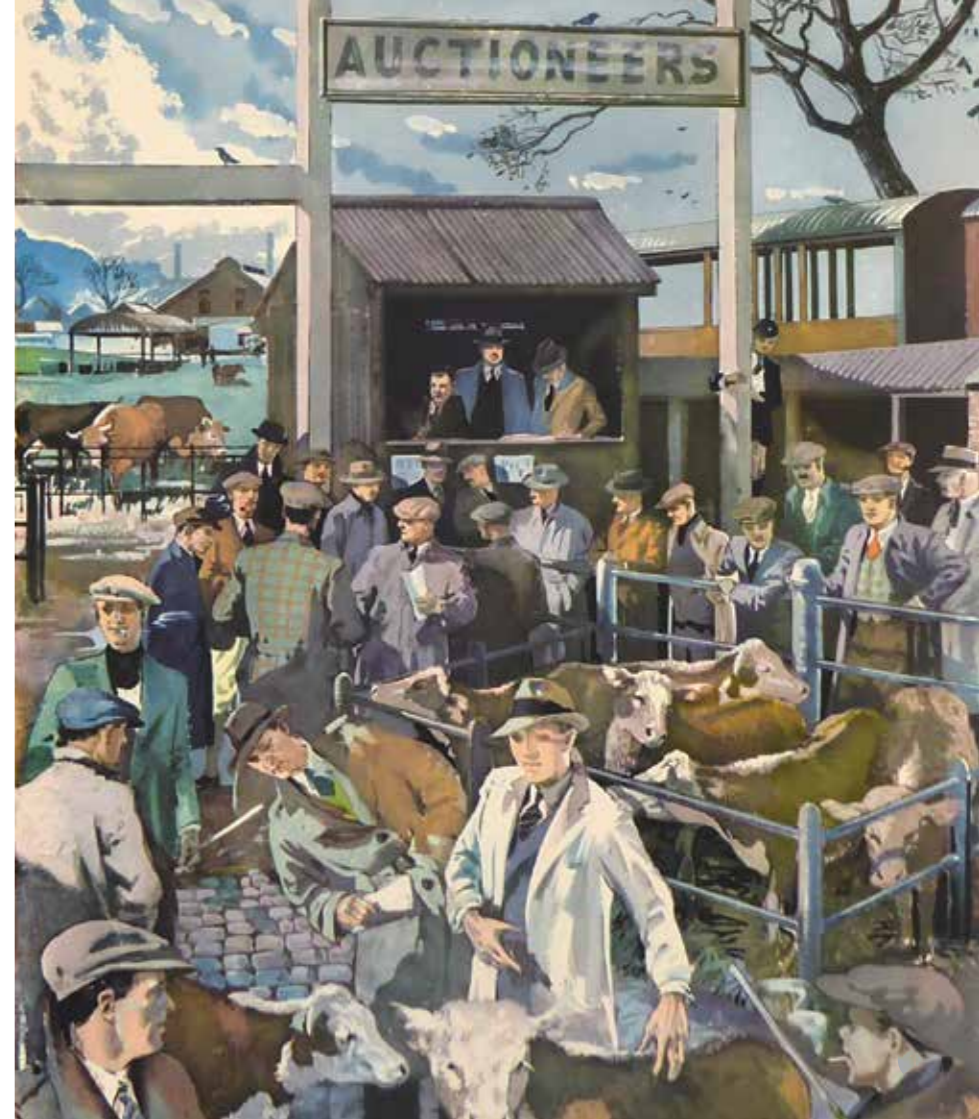
After Sir Howard Hodgkin (1923-2017), 'The Sky's the Limit', serigraph, edition of 500, published by The Lincoln Center, 76 x 83 cm

**Est £30 - £40**

81

A Georg Jensen 'Bernadotte' Range thermos jug, together with two matching carafes and a milk jug (4)

**Est £80 - £120**



82 A Georg Jensen 'Legacy' Range bowl, di. 16 cm  
Est £30 - £50



83 A pair of Georg Jensen 'Alfredo' Range pestle and mortars (2)  
Est £20 - £30

84 A Georg Jensen lidded jug or pitcher, h. 26 cm, together with a smaller matching milk jug (2)  
Est £30 - £50



85 A Georg Jensen 'Maria Berntsen Beak' insulated jug, together with a matching open jug (2)  
Est £50 - £80

86 A Georg Jensen 'Barbry' wire basket together with a pair of 'Henning Koppel' hurricane lamps (3)  
Est £50 - £80

87 A Georg Jensen brass container and cover of oval form, together with three further Jensen 'Alfredo' Range containers (4)  
Est £80 - £120

88 A set of four Georg Jensen 'Matrix' stainless steel vases including two cubes and two cylinders (4)  
Est £100 - £150

89 A Georg Jensen elephant money box together with a smaller matching container and a card case (3)  
Est £50 - £70



90 A pair of Georg Jensen 'Tunes' candle holders (2)  
Est £30 - £50

91 Arne Wahl Iversen for Vinde Mobelfabrik, a 1950/60's Danish teak desk, Model 56, the superstructure with a small drawer and letter holders, over two frieze drawers, on tapering legs, stamped to underside, Danish Control badge to drawer, 100 x 70 x 85 cm  
Est £600 - £1000



92 A 1960's Danish teak and crossbanded desk, the rectangular surface over 'levitating' pedestals and drawers, the reverse with a fall-front door and open sections, on circular tapering legs, 130 x 69 x 63 cm  
Est £250 - £300



93 A 1960's Danish teak and crossbanded kneehole desk, the rectangular surface over six drawers with an adjustable shelf, on circular straight legs, 125 x 60 x 75 cm  
Est £200 - £300

94 Spare Lot



**95** A 1960/70's Danish oak and crossbanded desk with four drawers on square straight supports, in the manner of Gunni Omann, 131 x 71 x 73 cm



**Est £200 - £300**

**96** A 1960's Danish three-way brass adjustable standard floor lamp on a cast iron base  
**Est £50 - £80**

**97** A 1970's Danish brass-finished twin-spot standard floor lamp  
**Est £40 - £60**

**98** A 1970's Danish half-height brass-finished adjustable standard lamp  
**Est £30 - £40**

**99** A 1970's Danish brass-finished open ceiling light  
**Est £30 - £50**

**100** A Nordlux spun aluminium pendant light with a teak mount  
**Est £30 - £40**

**101** A Jonathan Adler pottery 'Rocket' Tequila decanter, h. 34 cm  
**Est £50 - £70**



**102** A Jonathan Adler pottery 'Rocket' Whisky decanter, h. 31 cm  
**Est £50 - £70**

**103** A Jonathan Adler pottery 'Rocket' Rum decanter, h. 27 cm  
**Est £50 - £70**

**104** A Jonathan Adler pottery 'Rocket' Bourbon decanter, h. 29 cm  
**Est £50 - £70**

**105** A Jonathan Adler pottery 'Rocket' Scotch decanter, h. 33 cm  
**Est £50 - £70**



**106** A Jonathan Adler pottery 'Rocket' Vodka decanter, h. 25 cm  
**Est £50 - £70**

**107** A Jonathan Adler pottery 'Rocket' Gin decanter, h. 29 cm  
**Est £50 - £70**

**108** A set of four Jonathan Adler ceramic biscuit barrels decorated in black and white with 'Meow' labels, h. 22 cm (4)  
**Est £50 - £80**

**109** A Jonathan Adler brass finished ring holder modelled as a hand together with a matching footed bowl and a dolphin bowl (3)  
**Est £100 - £150**

**110** A set of four Jonathan Adler ceramic coasters in Festival of Britain designs (4)  
**Est £20 - £30**

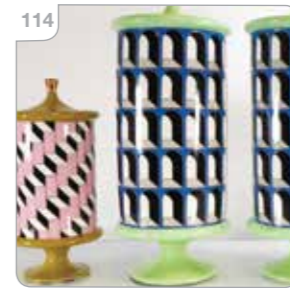
**111** A group of seven Jonathan Adler brass finished trinket/storage boxes with coloured perspex lids (7)  
**Est £80 - £120**



**112** A Jonathan Adler 'Hollywood' Range bathroom accessory suite (8)  
**Est £50 - £80**

**113** A pair of Jonathan Adler mottled green bowls, di. 21 cm (2)  
**Est £30 - £50**

**116** A group of white ceramic decorative objects including an 'Inked Juliette Mug', accent dishes etc. (8)  
**Est £30 - £50**



**114** A pair of Jonathan Adler 'Eden Lacquer' jewellery and watch boxes, 33 x 20 x 7 cm  
**Est £60 - £100**



**114** A pair of Jonathan Adler ceramic cylindrical footed cannisters, h. 38 cm, together with a smaller pair, h. 25 cm (4)  
**Est £100 - £150**



**119** A pair of Jonathan Adler boxes with blue and white 'snow' type decoration, 25 x 15 x 8 cm (2)  
**Est £40 - £60**

**115** A group of Jonathan Adler coloured ceramics including a pair of Pharaoh dishes, a cruet set etc. (21)  
**Est £50 - £70**

**118** A group of three Jonathan Adler 'Arcade Lacquer' boxes, 30 x 20 x 8 cm and 20 x 10 x 7 cm (3)  
**Est £60 - £100**

**120** A graduated pair of Jonathan Adler boxes in purple and blue with wave decoration, 30 x 20 x 8 cm and 25 x 15 x 8 cm (2)  
**Est £40 - £60**

123



121

A group of three Jonathan Adler geometric design boxes, 30 x 20 x 8 cm and 25 x 15 x 8 cm (3)

**Est £50 - £80**

122

A group of four Jonathan Adler geometric boxes, 20 x 10 x 7 cm (4)

**Est £60 - £100**

123

A pair of Jonathan Adler circular leatherette boxes, di. 23 cm, together with four kidney-shaped boxes (6)

**Est £50 - £80**

127



124

A large group of mainly German fish-related ceramics including plates, bowls, dishes, wall plaques etc. (Qty)

**Est £60 - £80**

125

A group of 1960's and later ceramic tealight and candle holders (14)

**Est £40 - £60**

126

A small group of Mdina, Adam Aaronson and similar glass paperweights, vases and scent holder, four signed (7)

**Est £60 - £80**

127

A group of art glass including a Chribska Glassworks vase, a Heinrich Loffelhardt for Schott Zwiesel jug, two Sklo Union vases etc. (9)

**Est £150 - £200**

128

A multi-faceted Murano 'Sommerso' vase, unsigned, h. 20 cm

**Est £30 - £40**

129

A group of German and other art glass including two Poschinger Glass iridescent vases, a Peill & Putzler vase etc. (7)

**Est £60 - £100**

130

Frank Thrower for Wedgwood, a pair of lead crystal smoke grey vases together with a similar vase (3)

**Est £20 - £30**

131

A Fulham Pottery twin-handled flower vase in a matt finish designed by Constance Spry, with impressed marks, w. 43 cm, together with a smaller white glazed example with printed marks (2)

**Est £200 - £300**

132



133

Keith Murray for Wedgwood, a matt green pedestal bowl, di. 26 cm

**Est £80 - £120**

133

Gunnar Nylund (Swedish, 1904-1997) for Rorstrand, a ceramic low open dish, impressed marks, di. 18 cm, together with a smaller bowl by the same designer (2)

**Est £40 - £60**

131



134 A group of six British studio pottery pieces including a jug by Richard Cheshire, a vase by A. Hardy etc. (6)

Est £30 - £50



135

135 A Tate Gallery commemorative pot designed by Patrick Caulfield in 1979, h. 12 cm

Est £100 - £150

136 A group of three Janice Tchalenko ceramic bowls, one with impressed marks, two with Next Interiors printed marks (3)

Est £50 - £70



139

137 A Hornsea Studio-Line footed flower posy decorated in the Atomic pattern, w. 34 cm, together with a matching bowl (2)

Est £30 - £40

138 A Pottery 'Swan Lake' Concept teapot and cover in salmon pink, designed by Martin Hunt in 1977, together with twenty-five matching tablewares in cream (26)

Est £100 - £150

139 A 1960's Polish fifteen-piece Cmielow coffee set decorated in red and white

Est £30 - £40

140 An Arabia Faenza coffee pot, a pair of large Emilia cups and saucers and a small brown Arabia teapot with a cane handle (4)

Est £30 - £50



141 Marianne Westman for Rorstrand, two 'Red Top', one 'Picknik' and one 'Granada' oven ware casserole dishes (4)

Est £30 - £40

142 'Concave Form': a yew tabletop sculpture in the manner of Conrad Lewis, initialled CL, h. 32 cm

Est £30 - £40



142

144 Kenneth Grange for Short & Mason, a Taylor desk thermometer and barometer in a teak frame, stamped to the underside, w. 25 cm

Est £40 - £60

143 Domhnall Ó Broin (1934–2005) for Caithness, a smoked brown decanter and stopper, h. 36 cm

Est £40 - £50



143

145 A Hadrill & Horstmann counterbalance/roller lamp in black

Est £100 - £150



**146** A Model 1636 red enameled desk lamp designed by Josef Hurka for Napako, maker's marks to the shade, h. 42 cm

**Est £80 - £120**

**147** A 1970's table lamp with a turquoise blue base with a chrome shade, designed by the Czech designer Stanislav Indra, h. 49 cm

**Est £80 - £120**



**149**

**149** Tom Titt (1885-1956), A humorous rural scene, signed and dated 1945, watercolour and ink, image 40 x 73 cm  
\*Tom Titt was the pseudonym of the Polish artist Jan Junosza de Rosciszewski. He worked as an illustrator for The New Age magazine and The Tatler.

**Est £60 - £100**

**148** Frank L. Cramphorn (1908-2000), Boats moored in a river, signed, oil on board, image 39 x 49 cm

**Est £60 - £80**

**150** Birger Th. Hansen (b. 1940), 'Bla Drom' (Blue Dream), signed, oil on canvas, image 32 x 62 cm

**Est £50 - £80**



**150**

**152** A group of Robert Welch stainless steel tablewares including four tazzas, a candlestick and a water jug (6)

**Est £40 - £60**

**153** A pair of WMF kitchen cannisters together with a figural egg cup by the same maker (3)

**Est £30 - £40**

**154** Attributed to Lindsey B, a 'Peking' jar in black together with a pair of Kosta Boda votive skulls (3)

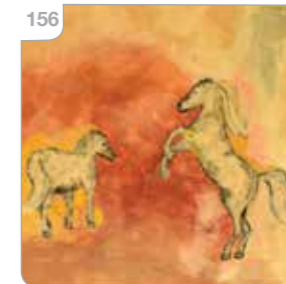
**Est £80 - £120**



**155**

**155** A collection of twenty-one Italian coloured perspex containers by Guzzini, 14 x 13 x 8 cm (21)

**Est £80 - £120**



**156**

**156** David Bruce Duncan (American, b. 1947), 'Gemini Stallion', signed and dated '76, collage painting, personalised inscription and artist's label verso, image 59 x 75 cm

**Est £100 - £150**

**157** Douglas Wilson RCA (1936-2021), An England flag flying in a garden, signed, oil on board, 92 x 61 cm unframed

**Est £80 - £120**



**159** Jens Risom for Jens Risom Design Limited, an executive office pedestal, on later turned legs, label to top drawer, 53 x 53 x 61 cm

**Est £50 - £80**

**161** A 1960's sculptural 'Autographed Furniture' Range coffee table by Herbert E Gibbs, the circular glass surface resting a laminate frame with brass caps and slender supports, badge to the underside, di. 65 cm, h. 41 cm

**Est £60 - £80**



**158** Douglas Wilson RCA (1936-2021), Brickworks in Flintshire, signed, oil on board, 50 x 60 cm unframed  
\*Provenance: The Douglas Wilson Studio Sale

**Est £100 - £150**

**160** A 1970's teak sideboard in the manner of White & Newton, on associated tapering legs, 153 x 49 x 80 cm

**Est £120 - £150**

**162** A 1960/70's teak open-fronted bookcase with adjustable shelves, on later turned legs, 138 x 30 x 76 cm

**Est £150 - £200**

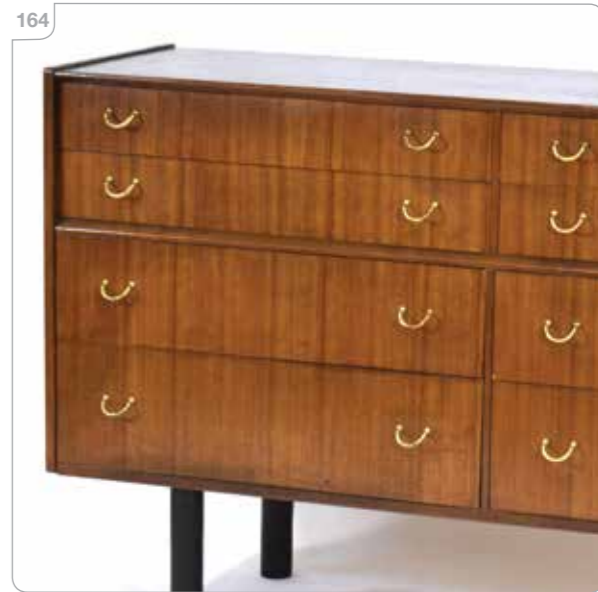


**163** A 1960's Dynatron Limited teak record cabinet with a fall-front, on matched tapering legs, 99 x 42 x 65 cm

**Est £100 - £150**

**164** A G-Plan E. Gomme 'Librenza' Range sideboard with an arrangement of eight long graduated drawers, brass handles, and later black legs, 150 x 46 x 90 cm

**Est £200 - £300**



**165** A 1960's teak cabinet, the pair of glazed doors enclosing glass shelves, on later turned legs, 90 x 35 x 149 cm

**Est £150 - £200**

**166** In the manner of Poul Hundevad, a 1960's Danish teak and crossbanded sideboard, the two doors enclosing a fitted maple interior with three drawers and two shelves, on later turned legs, 148 x 43 x 72 cm

**Est £300 - £400**





**167** A 1970's Danish aluminium standard lamp with a single partially brown-enamelled shade  
**Est £30 - £40**

**168** A 1970/80's Danish brass-finished ceiling light with perspex panels  
**Est £40 - £60**

**169** A Danish white enamelled four-tier open ceiling light in the manner of Louis Poulsen  
**Est £40 - £60**

**170** A Danish white enamelled four-tier open ceiling light in the manner of Louis Poulsen  
**Est £40 - £60**

**171** A set of six Crayonne cannisters/containers together with a graduated set of three Rosti bowls and a pair of salad servers (11)  
**Est £60 - £80**



**175**

**174** A group of 1950's Chance Glass including a carafe (15)  
**Est £40 - £60**

**177** Two boxed Dansk Designs cast metal candlestick holders (2)  
**Est £20 - £30**



**178**

**172** Geoffrey Baxter for Whitefriars, a 'Drunken Bricklayer' vase in cinnamon, h. 21.5 cm  
**Est £200 - £300**

**175** Tamara Aladin for Riihimaki, a green double-cased glass vase with paper label, h. 20 cm, together with four further Riihimaki vases and three (?) German glass candle holders (8)  
**Est £100 - £150**

**178** In the manner of Stilnovo, a set of five 1950's enamelled wall lights including two gooseneck examples, possibly Italian (5)  
**Est £150 - £200**

**173** A group of six Wedgwood glass candlesticks, one cased, together with a cased Rosenthal Studio-Line candlestick (7)  
**Est £40 - £60**

**176** Gerald Benney for Viners Studio, fifty-one pieces of bark-design cutlery, together with a box of 'Design 70' spoons, a box of Viners Sable teaspoons and a stainless steel four-piece tea set with teak handles (Qty)  
**Est £100 - £150**

- 179** A set of five 1950's scissor-arm wall lights enamelled in red, white and blue (5)  
**Est £200 - £300**

- 180** A late 20th century scissor-arm wall light with brass and copper highlights  
**Est £40 - £60**

- 181** A 1950/60's Memlite adjustable lamp with a green enamelled shade  
**Est £40 - £60**

- 182** A 1930's "Supreme" 'Entirely British Made' desk lamp with a shell-shaped shade and adjustable neck  
**Est £60 - £80**

- 183** A German ice crystal vase by Peill & Putzler together with seven similar clear/ice glass objects (8)  
**Est £30 - £50**

- 184** A group of German & Danish white glazed porcelain vases, money-box, figures etc. by Lorenz Hutschenreuther, H&G, PMR Bavaria etc. (11)  
**Est £100 - £150**

- 185** A group of 1960/70's German ceramics including three two-handled bowls, a charger and two further bowls (6)  
**Est £30 - £50**

- 186** An Italian ashtray by Baldelli, together with a Swedish example by Vilmund de Meyere and two others (4)  
**Est £40 - £60**

- 187** A 1971 terracotta charger decorated with a stylised face, di. 32 cm, together with a Swedish bowl by Szilasi Visby and four other pieces (6)  
**Est £50 - £80**

- 188** Arne Jacobsen for Fritz Hansen, a pair of 2010's Danish 'Series 3300' armchairs upholstered in purple wool fabric by Kvadrat, with chromed tubular supports, labels to underside \*SFP  
**Est £800 - £1200**

- 189** Charles and Ray Eames for Vitra, a 1980's Soft pad (Softpad) elbow or desk chair upholstered in black leather, Model EA215, with a chrome four-star static base \*SFP  
**Est £800 - £1200**





**190** A live-size fibreglass figure modelled as an American Police officer wearing a motorcycle helmet and reaching for his sidearm, 'C. AAA' mark to the rear, h. 188 cm

**Est £200 - £300**

**191** In the manner of Liberty of London, a leather-clad figure modelled as a camel, h. 91 cm

**Est £100 - £150**



**192** A 1970's Danish white enamelled three-tier ceiling light with a red highlight

**Est £30 - £40**

**193** A 1970's Danish brass-finished ceiling light with amber-type decoration

**Est £30 - £50**



**194** A Danish red enamelled casserole dish and cover by Nacco, di. 29 cm, together with a teak cooling stand (2)

**Est £50 - £70**

**199** A 1950's Swiss bakelite wall-mounted telephone by Weidmann

**Est £30 - £40**

**194** A Danish copper coloured ceiling light with a moulded perspex diffuser

**Est £50 - £70**

**195** A group of three 1970's Danish brown enamelled ceiling lights (3)

**Est £100 - £150**

**196** A Danish white enamelled pull-down ceiling light

**Est £30 - £40**

**198** Clarice Cliff for Newport Pottery, a 'Bizarre' Range bowl decorated in the 'Pansies' pattern, di. 21.5 cm

**Est £80 - £120**



**200** Walenty Pytel (Polish, b. 1941), a bronze sculptural head modelled as a bird, on a white marble base, h. 24 cm, w. 39 cm

**Est £400 - £600**



**201** Manfred Frey for Kaiser, a classical vase in matt white, h. 14 cm, together with four further German matt white vases (5)

**Est £50 - £80**

**202** Kurt Wendler for Edelstein, a 1960's German white/blanc de chine ewer relief decorated with stylised figures, h. 25 cm, together with two further pieces by the same factory (3)

**Est £40 - £60**

**203** A 1994 Cuban pottery plate by Eduardo Leyva together with a (?) German studio pottery bowl surmounted by a lizard (2)

**Est £40 - £60**

**204** A group of German pottery by Steuler including a Cyclone 191/15 vase, h. 15 cm, a Cari Zalloni designed bowl etc. (8)

**Est £120 - £150**

**205** A group of Italian, German and similar pastel pottery including ewers, vases and a small bowl (12)

**Est £60 - £80**



**206** A Swedish pottery charger by Tilgmans Keramik decorated with a figure on horseback, impressed marks, di. 34 cm

**Est £20 - £30**

**209** A pottery figure modelled as a stylised bull, w. 32 cm

**Est £30 - £50**



**210** A group of Danish and other pottery figures including two bears, a large cockerel, a chicken etc. (7)

**Est £60 - £80**

**207** A 1970's Italian pottery plaque by Garda Sul Lago depicting four fish, 29 x 20 cm, together with a similar plaque depicting a musician and four smaller plaques (6)

**Est £30 - £50**

**208** Algimantas Patamsis (b.1953), a 2013 Lithuanian crystalline glazed porcelain vase in blue and gold, signed, h. 19 cm, together with a similar vase (2)

**Est £40 - £60**



**211** A Modernist bronzed candlestick, h. 12 cm

**Est £20 - £30**

**212** A 1970's French gilt lacquered table base by Pierre Vandel, together with a matching set of four chairs \*SFP

**Est £200 - £300**

**213** A 1960's Interflex teak modular shelving system including two full-length uprights, four half-length uprights, a sliding door cabinet, a fall-front cabinet, a cocktail cabinet with internal light, a glazed cabinet and 2 shelves (Qty)

**Est £80 - £120**

**214** W.H. Russell for Gordon Russell Limited, a 1969 'Burford Range' rosewood and mahogany extending dining table, with one fitted leaf, label to the underside, 77-230 cm x 106 cm, together with six matching chairs including two carvers CITES Article 10 Transaction Specific Ref:

**Est £400 - £600**



**215**

A 1960's oak framed three-seater sofa upholstered in green and white check fabric, w. 228 cm \*SFP

**Est £100 - £150**



## Mid-Century Design Soft Furnishings Policy

The Furniture and Furnishings (Fire) (Safety) Regulations 1988 (as amended in 1989 and 1993) state that all soft furnishings holding foam must conform to BS 5852 standards. This means that any post-1988 furniture will need to bear a fire label for auction purposes.

The following exceptions apply:

- Items constructed pre-1950. [Regulation 4(a)]
- Items being sold to someone who is in the business of reupholstering furniture. [See Regulation 4[b] and Consumer Protection Act 1987, s.46(7)]
- Items being sold to someone who is in the business of dealing in furniture. [Regulation 14(1)]
- Items being sold that will not be used in a domestic setting in the UK; e.g. for export, for use in a museum or theatre, as a work of art. [Regulation 3(1a) and 4(c)]

The Mid-Century period has been recognised as an area of increased interest to collectors for many years now. The relevant soft furnishings in our sales have been carefully selected to be collector's pieces which are purchased for their design qualities.

Soft furnishings in this sale are being sold as collector's items and are NOT intended for private use in the UK. They may not be in compliance with the Furniture & Furnishings (Fire)(Safety) Regulations 1988 and should be re-upholstered to conform to BS 5852 prior to any use in a domestic dwelling.

Bids are only accepted on the agreement that the furnishings will not be used in a domestic dwelling in the UK.

This policy is in-line with all major UK auctioneers and the Mid-Century trade.

**216** A 1960/70's teak daybed, the orange button-upholstered seat with two loose back cushions, the side with a removeable teak shelf, 160 x 85 cm  
**Est £150 - £250**

**217** A 1950's 'Antelope' chair by Ernest Race, the white metalwork frame supporting a bentwood seat  
**Est £100 - £200**

**218** A 1930's oak dentist's cabinet with an arrangement of doors and drawers, 77 x 32 x 106 cm  
\*A similar cabinet is understood to be on board the HMS Belfast.  
**Est £150 - £200**



**219** Charles & Ray Eames for Hille, under license from Herman Miller, a set of four fibreglass shell chairs on Eiffel Tower-bases, labelled (4)  
**Est £400 - £600**

**220** A pair of Italian white laminate wall shelves by Calligaris, labelled, 90 x 22 x 22 cm  
**Est £30 - £50**

**221** A set of three Scandinavian teak graduated wall-mounted uprights for wall shelves (3)  
**Est £40 - £60**

**222** A pair of 1980's pine articulated side tables or mannequins in the form of stylised figures  
**Est £60 - £80**

**223** A 1960's faux-rosewood and tubular magazine rack/occasional table, 49 x 19 x 43 cm  
**Est £40 - £60**

**224** A 1970's Danish teak/iroko planter, 103 x 21 x 46 cm  
**Est £40 - £60**



**225** A 1960's teak-framed rectangular wall mirror, 90 x 30 cm  
**Est £60 - £80**

**226** A group of fifteen German, Danish, Swedish and other pottery vases including Asa, Ekeby, West German, Danico, Aurelia, Amano etc. (15)  
**Est £60 - £100**



**227** A group of mainly German 1960/70's ceramic vases, ewers and jugs including Karlsruhe Majolika Company, Ruscha etc. (19)  
**Est £100 - £150**



**228** Inga Anderson (Danish), A blue figure walking down an autumnal lane, signed verso and dated 1973, oil on canvas, image 46 x 30 cm  
**Est £30 - £50**

**229** A set of three 1960 Swedish wool wall hangings, largest pair 53 x 35 cm each (3)  
**Est £60 - £80**



**233** Antje Bruggemann for Rosenthal, a 'Linear' Range vase, h. 21 cm, together with a group of other Rosenthal ceramics (15)  
**Est £40 - £60**



**230** Frank Martin (1921-2005), 'Biscayne', signed in pencil and numbered 39/100, etching, image 38 x 60 cm  
**Est £60 - £80**

**231** Wolf Bauer for Rosenthal, a group of 1970's Studio-Line floral porcelain including a container and cover together with three further vases (4)  
**Est £80 - £120**



**232** Bjorn Wiinblad for Rosenthal, a pair of Studio-Line 'Face' vases, h. 17 cm, together with a similar container and cover and bell (4)  
**Est £40 - £60**



**234** Bjorn Wiinblad for Rosenthal, a group of Studio-Line vases and dishes decorated on a cobalt blue ground (15)  
**Est £60 - £80**

**235** Bjorn Wiinblad for Rosenthal and Nymolle, a group of wall plaques of various styles and sizes including 'La Paloma' charger, Seasons etc. (17)  
**Est £100 - £150**

**236** A group of Norwegian wall plaques by Figgjo Flint including two large 32 x 15 cm and twelve smaller, 16 x 11 cm (14)  
**Est £60 - £80**



**237** A pair of German ceramic wall plaques by Karlsruhe Majolika Company, each depicting boats at sea, 46 x 33 cm each (2)  
**Est £80 - £120**

238



238 A German ceramic wall plaque by Karlsruhe Majolika Company depicting the Taj Mahal, 49 x 33 cm

Est £40 - £60

239

A West German ceramic plaque by Ruscha depicting two stylised figures on a blue ground, 50 x 22 cm

Est £40 - £60

240

A 1950's San Marino ceramic wall plaque depicting a still life on mottled grey ground, impressed 'Ceramica Souvenir RSM', 19 x 51 cm

Est £40 - £60

240



46

illustrated: lot 239, 241, 242



241

A 1950/60's ceramic wall plaque relief modelled with a stylised rider and chariot, unmarked, 14 x 47 cm

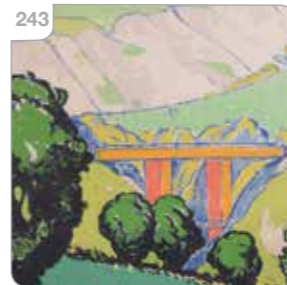
Est £40 - £60

242

Gregory Brown (1887-1941), A London Zoo poster, 'Camden Town, Regents Park, Chalk Farm', printed by The Dangerfield Printing Co., 99 x 61 cm

Est £300 - £500

243



243

Gregory Brown (1887-1941), A Leatherhead transport poster, cut-down, image 56 x 54 cm, together with a Fred White 'The Rock on Which to Build' poster (2)

Est £80 - £120







**244** Adolphe Mouron Cassandre (French, 1901-1968), 'Venezia', off-set lithographic poster, lacking borders, stuck to board, image 95 x 58 cm  
**Est £100 - £200**

**246** A 1970's Danish brass-finished twin-spot floor lamp on a black circular base  
**Est £30 - £40**

**248** A Danish white enamelled three-tier ceiling light  
**Est £30 - £40**

**245** A 1970's Danish brass-finished twin-spot floor lamp  
**Est £30 - £40**

**247** A 1970's Danish white-enamelled twin-spot floor lamp  
**Est £30 - £40**

**249** A Danish glossy white open ceiling light  
**Est £30 - £40**

**250** A contemporary Danish matt grey pendant light  
**Est £30 - £40**



**255** Walter Leslie Fenner (1927-2007), A stylised street, signed, oil on board, image 51 x 33 cm  
**Est £40 - £60**



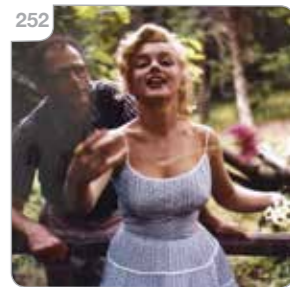
**251**

**253** A 1960's white enamelled adjustable standard lamp with a brass flex  
**Est £40 - £60**



**254**

**254** A 1970's teak and tile-topped coffee table, the rectangular surface over a second tier, 123 x 46 cm  
**Est £50 - £80**

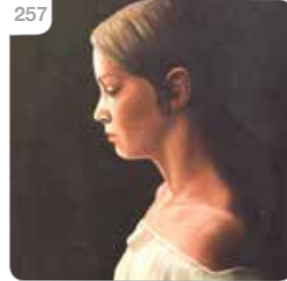


**252**

**252** Sam Shaw (Photographer), Marilyn Monroe and Arthur Miller at Roxbury 1957, mounted and framed, Shaw Archive stamps verso, 6/52, image 41 x 41 cm  
**Est £60 - £80**

**256** Charles & Ray Eames for Herman Miller, an Aluminium Group bistro table, the laminate surface on a four-star base, di. 90 cm

**Est £60 - £80**



**257**

**257** Jepson (20th Century), A head and shoulders portrait of a young lady, signed and dated '79, oil on canvas, image 49 x 39 cm

**Est £30 - £50**

**259** Swedish School, A stylised nude portrait, unsigned, Stockholm label verso, oil on canvas, 107 x 89 cm

**Est £60 - £80**

**260** Sture Haglundh (Swedish, 1908-1978), A North Italian scene, signed and dated '60, oil on canvas, image 57 x 85 cm

**Est £80 - £120**



**260**

**261** A 1950's ceramic wall plaque by Helmut Friedrich Scaffenacker relief modelled as a still life, 34 x 23 cm

**Est £40 - £60**

**258** 'Spira Mirabilis' or Golden Section: a white painted pine relief panel, 65 x 41 cm

**Est £40 - £60**



**262** A group of 1960's five ceramic wall plaques depicting sailing ships, by Karlsruhe Majolika Company, Ruscha etc. (5)

**Est £80 - £120**

**263** A group of six 1960's ceramic wall plaques depicting sunflowers, by Ruscha and others (6)

**Est £120 - £150**



**263**

**265** A set of four 1960's Dutch ceramic wall-hung plaques decorated with bright flowers, by Jan Van Erp (4)

**Est £40 - £60**

**264** A 1960's Karlsruhe Majolika Company ceramic wall plaque relief modelled with a resting bull, 35 x 27 cm, together with two pairs of square plaques depicting further animals (5)

**Est £100 - £150**

**266** Two 1960's ceramic graduated wall plaque sets, each with four circular sections, overall height c. 80 cm incl. chains (2)

**Est £40 - £60**



**269** A group of four 1960's German ceramic wall plaques decorated with flowers and an owl, by Ruscha Pottery, three 45 x 34 cm and one 59 x 35 cm (4)  
**Est £120 - £150**

**271** After Rosina Wachtmeister (Austrian, b. 1939), A musician, lithographic print with highlights, image 37 x 30 cm  
**Est £30 - £40**

**267** A ceramic wall plaque depicting a bright red fish, 32 x 20 cm, together with another modelled as two chickens (2)  
**Est £30 - £40**

**268** A large pair of 1960's German ceramic wall plaques of circular form decorated with bright flowers, by Ruscha Pottery, di. 49.5 cm each (2)  
**Est £60 - £80**

**270** A 1960's German wall plaque decorated with foxgloves, 50 x 12 cm, together with another plaque relief modelled as a still life (2)  
**Est £40 - £60**

**272** A 1970's Danish black enamelled twin-spot floor lamp  
**Est £30 - £40**



**273** A 1970's Danish 'burnt brass' twin-spot floor lamp  
**Est £30 - £40**



**274** Swedish School, 'Kyrkbacken Ven', unsigned, oil on canvas, image 61 x 100 cm  
**Est £50 - £70**

**275** A Japanese Pachinko pin-ball games machine, 83 x 52 cm  
**Est £60 - £80**

**277** Walenty Pytel (Polish, b. 1941), a green-patinated bronze sculpture modelled as a bird of prey, initialled to the tail, h. 32cm, together with a watercolour of the sculpture (2)  
**Est £300 - £500**

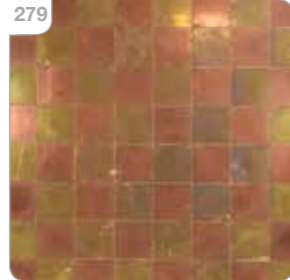


**274** Swedish School, 'Kyrkbacken Ven', unsigned, oil on canvas, image 61 x 100 cm  
**Est £50 - £70**

**276** A 1960's Olivetti 'Valentine' typewriter in red, designed by Ettore Sottsass  
**Est £80 - £120**

278 A Kose Milano tray or stand, di. 42 cm

Est £20 - £30



279

A 1970's copper and brass chess board

Est £40 - £60

280 A Pifco white gooseneck desk lamp together with a Metamec clock, a group of 'eyeball' lamps and a green cobra telephone (Qty)

Est £60 - £80

281 A Harvey Guzzini Desin Studio red and white Italian table lamp in the form of a mushroom, h. 26 cm

Est £60 - £80

283 A set of seven candle holders in the style of Nagel, together with an Austin Sculptures figural group and two atomic wire magazine racks (Qty)

Est £40 - £60

284 Vicke Lindstrand for Kosta, a pair of Swedish 'Pippi' ice buckets together with a Kosta decanter and an unsigned vase (4)

Est £50 - £70



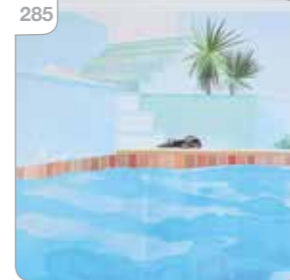
282

Derek Davis (1926-2008), a stoneware ovoid vase with a small aperture, signed, h. 19 cm

Est £60 - £100

285 After Mark Rothko, 'Celebration D'Art', exhibition poster, 38 x 21 inches, together with 'Blue and Grey' off-set lithograph poster, limited edition of 800, 30 x 27.5 inches (2)

Est £40 - £60



286

After Marc Chagall, 'Le Chevauchee' (Hors e Ride), off-set lithograph, no text, published by Pace Columbus for Exhibition in 1979, 31 x 22 inches (2 copies), together with 'The Magic Flute (Die Zauberflote)' for Metropolitan Opera, and Chagall at Pace Columbus (4)

Est £80 - £120



288

After René Magritte, 'La Magi Noire', off-set lithograph, 27 x 20 inches, together with 'L'Heureux Donateur' and 'Son of man' (3)

Est £40 - £60



287

After Dame Elisabeth Frink RA, 'Sir Thopas' signed print from the Canterbury Tales set of 19, Edition of 75, etching and aquatint, 65 x 46 cm \*The folio page which is not included in the lot is signed and numbered.

Est £160 - £200

289 After Dame Elisabeth Frink RA, 'The Pardoner's Tale' signed print from the Canterbury Tales set of 19, Edition of 75, etching and aquatint, 65 x 46 cm \*The folio page which is not included in the lot is signed and numbered.

Est £160 - £200



289

290 After Barbara Hepworth, Art & Life exhibition poster, 68 x 48 cm  
**Est £20 - £30**

291 A pair of three-seater 'Can' sofas by Hay together with a pair of matching armchairs (4) \*SFP  
**Est £500 - £700**



292 Louis Poulsen for Poul Henningsen, a pair of 1960's Danish 1st-Edition PH4 pendant lamps in orange (2)  
**Est £300 - £500**

293 Louis Poulsen for Poul Henningsen, a 1960's Danish 1st-Edition PH4 pendant lamp in blue  
**Est £150 - £200**

294 A 1970's Japanese 'Cobra' desk lamp in yellow designed by Masayuki Kurokawa  
**Est £100 - £200**



295 Hans-Agne Jakobsson for Markaryd, a brass ceiling light with blue tassel fringe, Model T601/M, d. 28 cm  
**Est £100 - £200**

297 Uno & Osten Kristiansson for Luxus, a 1960's Swedish wall light, the cylindrical shade on an oak shaft, bearing label  
**Est £100 - £150**

296 A 1960's tubular metal table lamp with a cane/rattan tapering shade, h. 47 cm  
**Est £80 - £120**

298 A Le Klint 'Sax' wall lamp with teak scissor arm, designed by Erik Hansen  
**Est £80 - £120**

299 A 1960's Dutch three-tier wall shelf in red, blue and yellow, w. 55 cm  
**Est £60 - £80**



300 A group of sixteen 1970's wirework stacking paper trays in red, green and grey (16)  
**Est £40 - £60**



**301** A German pottery wall clock with orange and green glazes by Kienzle, di. 30 cm

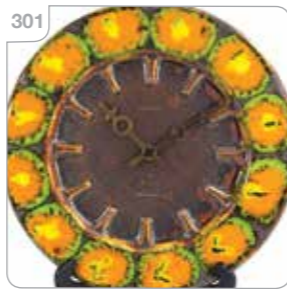
**Est £30 - £40**

**302** A Danish pottery wall plaque by Søholm Keramik relief decorated with a horse and carriage, 26 x 42 cm

**Est £20 - £30**

**304** A pair of German pottery wall plaques by Ruscha decorated with floral sprays, 37 x 22 cm, together with a smaller plaque by the same maker (3)

**Est £50 - £70**



**303** A German pottery wall plaque by Karlsruhe Majolika Company relief decorated with Continental villas, 42 x 21 cm

**Est £20 - £30**

**305** After Sir Howard Hodgkin (1923-2017), 'The Sky's the Limit', serigraph, edition of 500, published by The Lincoln Center, 76 x 83 cm

**Est £30 - £40**

**306** A 1960/70's five-tier metalwork organiser in yellow, orange, green, red and purple, 39 x 20 x 33 cm

**Est £40 - £60**

**307** A 1960's pexi-glass magazine rack, 36 x 16 x 34 cm

**Est £30 - £40**

**308** Ettore Sottsass for Olivetti, a Synthesis waste bin in burgandy, named to interior, h. 56 cm

**Est £50 - £80**

**309** A 1960's G-Plan teak sideboard with a pair of doors, four drawers and a fall-front door, on tapering legs joined by stretchers, w. 206 cm, h. 79 cm

**Est £300 - £400**

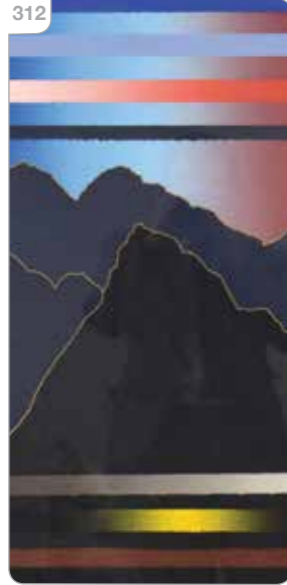


311



**312** Arthur Secunda (American, 1927-2022), 'Notte Luganese', signed and numbered 78/100, screenprint, image 71 x 53 cm  
**Est £60 - £80**

312



**313** A 1960's bamboo 'Elephant Boot' tub chair originally designed by Eero Aarnio  
**Est £100 - £150**

310

A pair of bamboo and fabric floor lamp shades, h. 100 cm  
**Est £40 - £60**

311

James William Smith Cox (American, 1911-1982), A pair of boats, signed and dated 1-61, mixed media, image 54 x 36 cm  
**Est £80 - £120**



314

Piero De Longhi for Cattelan Italia, a 21st century Italian 'Helix' coffee table, the glass surface resting on a walnut three-part base, labelled, di. 120 cm  
**Est £300 - £500**

315

A nest of three 1950's Swedish 'Walking' occasional tables in walnut designed by Bengt Ruda, max. 54 x 35 x 50 cm  
**Est £180 - £220**

315



316

After Arne Jacobsen, an 'Egg' chair upholstered in brown leather on a four-star chromed base \*SFP  
**Est £400 - £500**

317

Finn Ostergaard for Kvist Mobler, an 'Alberts 29000 Serie' beech bentwood and canvas webbed lounge armchair  
**Est £150 - £200**



**318** A set of four chromed 'Spaghetti' chairs together with another similar (5)

**Est £100 - £150**



illustrated: lot 320, 324

**319** A 1960's white moulded plastic 'mushroom' table lamp in the manner of Guzzini, h. 44 cm

**Est £40 - £60**

**320** A 1950/60's Poole 'Freeform' vase, Style 701, signed PRR, h. 33 cm

**Est £40 - £60**

**321** A Finnish Alvar Aalto Collection iittala vase, boxed (120mm clear)

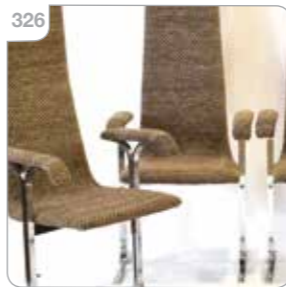
**Est £20 - £30**

**322** Bertil Vallien for Kosta Boda, a blue cased-glass 'Satellite' bowl, numbered 59252, di. 21 cm, boxed

**Est £50 - £80**

**323** Lord Norman Foster for Tecno, a 'Nomos' table, the glass circular surface resting on a chromed base, di. 120 cm

**Est £400 - £600**



**326** Tim Bates for Pieff, a set of four 'Lisse' Range armchairs upholstered in chevron fabric with flat steel frames \*SFP

**Est £150 - £200**

**324** E W Bach for Sejling Skabe, a 1960's Danish teak sideboard with three sliding doors enclosing drawers and shelves, over three further drawers, each with organic form handles, on triangular form legs, w. 165 cm, h. 113 cm, Denmark stamps to drawers

**Est £200 - £300**



**325** Robert Heal for Staples, a teak modular 'Ladderax' shelving system or divider including two white metal uprights, two fall-front bureaus, one shelf and the associated cross-members

**Est £200 - £300**



**327** In the manner of Ingmar Relling, a 1960's Danish lounge armchair with a laminate frame and brown leather upholstery \*SFP

**Est £80 - £120**

**328** A cased set of six gilt Modernist apostle coffee spoons

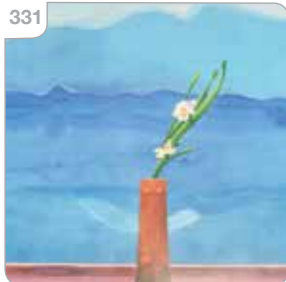
**Est £40 - £50**

**329** A 1970's teak cabinet, the two glazed doors with brass-finished handles, over a fall-front, on tapering legs, w. 93 cm, h. 137 cm

**Est £120 - £150**

**330** A 1970's teak open side/console table on later cylindrical legs, w. 102 cm

**Est £50 - £70**



**331**

**331** After David Hockney, 'Mount Fuji and Flowers', off-set lithograph, 34 x 25 inches

**Est £30 - £40**



**332** After Andy Warhol, 'Marilyn- Orange shot on white background', off-set lithograph, Edition of 2,000 published by Te Neus in 1992, 31 x 23 inches, together with 'Princess Diana', Edition of 1,000 (2)

**Est £40 - £60**

**334** After Patrick Nagel, 'Commemorative 11', published by Mirage Editions, serigraph, 36 x 24 inches  
\*Nagel produced a series of 15 original posters that he titled 'Commemorative' posters over a period of four years. The work is representational of the type of high-tech glossy look of the '80s.

**Est £50 - £80**

**335** After Patrick Nagel, 'Commemorative 14', published by Mirage Editions, serigraph, 36 x 24 inches  
\*Nagel produced a series of 15 original posters that he titled 'Commemorative' posters over a period of four years. The work is representational of the type of high-tech glossy look of the '80s.

**Est £50 - £80**



**335**

**333** After Jim Dine, 'Self portrait next to coloured window', off-set lithograph, Edition of 500, 25 x 34 inches, together with 'Erinnerrung an einen Gart' and 'Hans Hofmann Works on Paper' (3)

**Est £30 - £50**



**336** After Patrick Nagel, 'Commemorative 15', published by Mirage Editions, serigraph, 36 x 24 inches  
\*Nagel produced a series of 15 original posters that he titled 'Commemorative' posters over a period of four years. The work is representational of the type of high-tech glossy look of the '80s.

**Est £50 - £80**

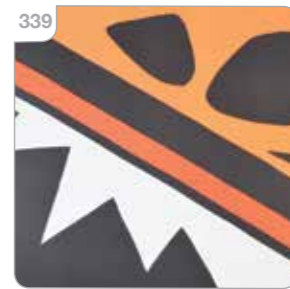
**337** After Francis Bacon, 'Georges a Bicyclette', Printed on Stonehenge paper, Edition of 500 published by Maeght, printed by Arte, 35.5 x 25.5 inches, together with a George Dokupil 'Fishing' poster for Leo Castelli's 1985 exhibition, a Jim Dine 'Still Life' poster and a Victor Vasarley poster (4)

**Est £40 - £60**

illustrated: lot 338

**338** After Roy Lichtenstein, 'Reflections on Crash', off-set lithograph for the Gallery of Australia

**Est £30 - £50**



**340** After David Hockney, 'Pool and Steps', off-set lithograph, 34 x 25 inches

**Est £80 - £120**



**342** A French brooch by Lea Stein modelled as a pouncing panther

**Est £70 - £90**



**339** After Alexander Calder, off-set lithograph poster for Pace/Columbus Exhibition 1971, La Greouille et la Scie (large)

**Est £30 - £50**

**341** A French brooch by Lea Stein modelled as a fox

**Est £70 - £90**

**343** A French brooch by Lea Stein modelled as a cat face in 'bronze'

**Est £70 - £90**



**344** A silver and lapis lazuli brooch/pin of Art Deco form, stamped 925  
**Est £25 - £30**

**345** A cased set of eight Alessi coffee spoons by various designers  
**Est £80 - £120**

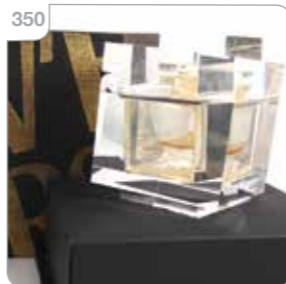


**346** Philippe Starck for Alessi, a 'Voila Voila' stainless steel tray, boxed  
**Est £140 - £160**

**347** Two Philippe Starck reference books (2)  
**Est £10 - £15**

**348** Carsten Jorgensen for Bodum, an Italian 'Ottoni' kettle  
**Est £80 - £120**

**349** A boxed 'Sparklets' double-capacity soda syphon in red  
**Est £30 - £40**



**350** Thierry Lecoule for Versace, a limited edition 'V'E parfum' perfume bottle/cube designed in the Art Deco manner in lucite, based on a copy of Gianni Versace's personal inkwell (calamaio), empty, cased  
**Est £150 - £200**



**Lots 351 - 356**  
**Rita Burns (1928 - 2022)**

Rita was born in London and attended part-time courses at St Martins School of Art in the early 1950's. She moved to Hertfordshire in 58 and qualified as a teacher of art at Balls Park College in 1972. She has taught in many comprehensive schools in Hertfordshire and it is the journeys to-and-from these schools which have given her inspiration. Exhibitions include RA Summer Exhibition 1980, 2004, 2005,2006, Print Exhibition Camden Institute 1981 etc.



**351** Rita Burns (1928-2022), A group of still life etchings and silkscreens, including duplicates, unframed (12)

**Est £120 - £150**

**352** Rita Burns (1928-2022), A group of landscape etchings and silkscreens, including duplicates, unframed (15)

**Est £150 - £200**

**353** Rita Burns (1928-2022), 'Variations on a Winter Landscape', including duplicates, monoprint, together with five others, various editions (6)

**Est £60 - £100**

**354** Rita Burns (1928-2022), 'Colourful Nude', signed and numbered 2/3, unframed, together with 'Lucknow, India' (5) and various other artworks (Qty)

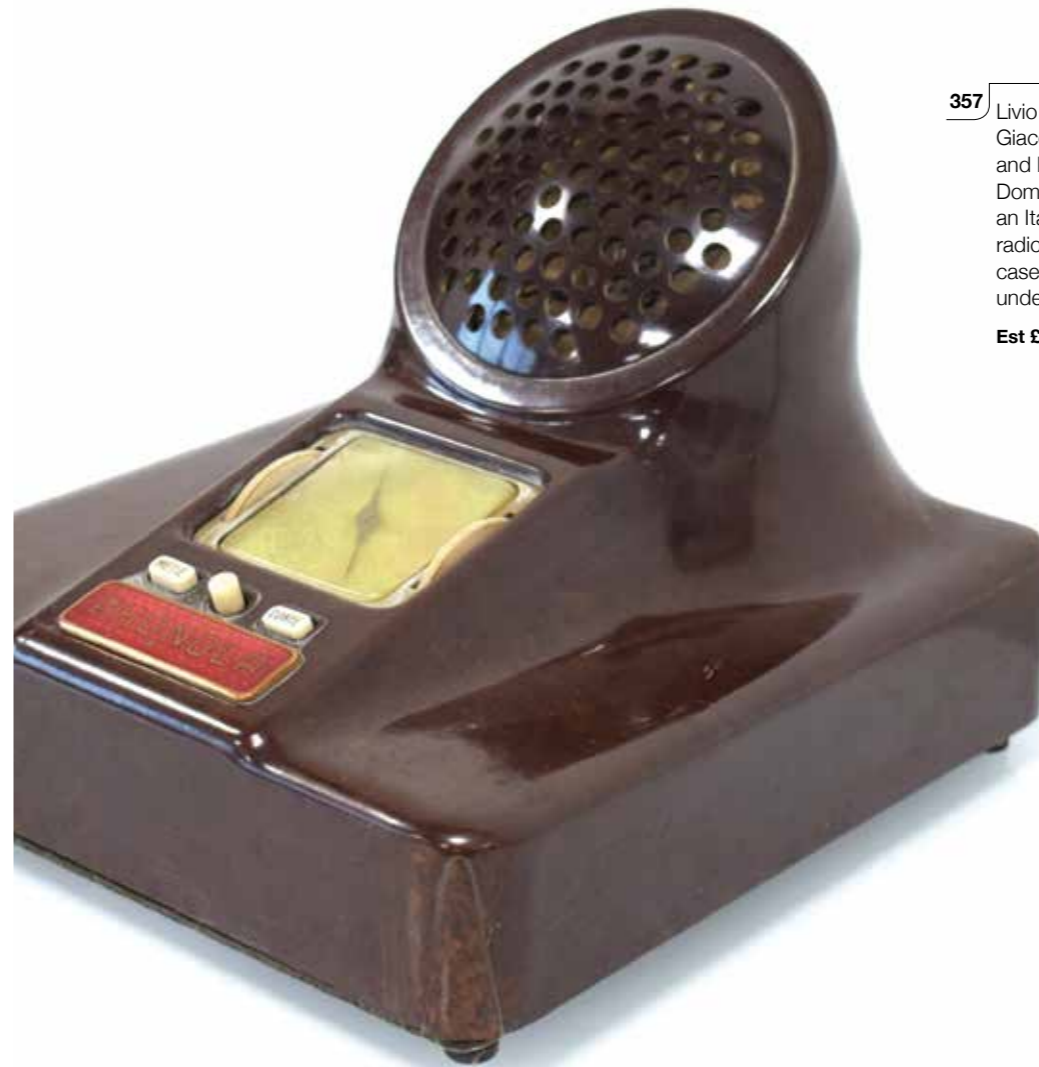
**Est £80 - £120**

**355** Rita Burns (1928-2022), a group of nine collagraph and etchings depicting beach/seascapes (9)

**Est £50 - £80**

**356** Rita Burns (1928-2022), a group of sixteen silkscreen prints and etchings depicting window scenes (16)

**Est £80 - £120**



**357** Livio Castiglioni, Pier Giacomo Castiglioni and Luigi Caccia Dominioni for Phonola, an Italian Model 563 radio in a brown bakelite case, numbers to the underside

**Est £300 - £400**

**358** A 1940/50's Danish 'Banana' sofa upholstered in green on mahogany block feet \*SFP

**Est £400 - £600**

**359** A 1950's Danish 'Banana' sofa upholstered in green on teak triangular feet \*SFP

**Est £400 - £600**

**360** A 1950's Danish corner or 'Banana' sofa upholstered in cream floral fabric

**Est £400 - £600**

**361** A 1960's Danish two-seater sofa or loveseat with a 'wrap-around' frame, on beech tapering legs \*SFP

**Est £200 - £300**

**362** A 1960's Ikea 'Axstad' lounge chair designed by Kim Samson, the beech frame supporting a webbed seat \*SFP

**Est £200 - £300**

**363** A 1960's Danish beech bentwood armchair with a webbed seat, designed by Finn Ostergaard

**Est £150 - £200**



**366** A 1960's teak three-drawer low side table on later beech tapering legs, 153 x 45 x 53 cm

**Est £150 - £200**

**364** A 1960's Danish beech bentwood armchair with a webbed seat, designed by Finn Ostergaard

**Est £150 - £200**

**365** A pair of 1970's teak bedside cabinet, each with a single door, moulded handle and later tapering legs

**Est £80 - £120**

**367** A set of four 1960's Danish teak and upholstered dining chairs \*SFP

**Est £80 - £120**

**368** A set of six 1960's teak bar-back dining chairs \*SFP

**Est £150 - £200**

**369** A 1950/60's walnut single-drawer bedside table on tapering legs with brass caps, 61 x 45 x 43 cm

**Est £40 - £60**



**370** A 1970's teak cabinet with two smoked glass doors, together with a similar bookcase with two white doors, each on later tapering legs (2)

**Est £100 - £150**

**371** A 1950's highback armchair upholstered in dark green button upholstery \*SFP

**Est £150 - £200**

**372** A 1950's Danish 'Shell' armchair upholstered in grey on tapering legs \*SFP

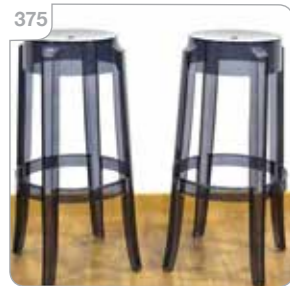
**Est £200 - £300**

**373** A 1950s Hilleplan sideboard designed by Robin Day, the two sliding doors enclosing shelves and interior drawers, on tapering legs, w. 137 cm, h. 76 cm

**Est £400 - £600**

**374** After Eero Aarnio, a 'Cognac' style lounge chair with a white moulded body and loose red cushion seat \*SFP

**Est £120 - £150**



**375** Philippe Starck for Kartell, a pair of 'Charles Ghost' stools

**Est £60 - £80**



**376** A contemporary Conran Shop two-tiered glass coffee table, 120 x 60 cm

**Est £60 - £80**

**378** A pair of Grand Soliel deckchairs with white tubular frames and stripped seats

**Est £30 - £40**

**380** A 1960's Danish bow-fronted green button-upholstered sofa on mahogany tapering legs, w. 200 cm

**Est £300 - £400**



**377** A set of three 1970's Chromcraft dining chairs with smoked perspex backs over grey seats on four-star bases \*SFP

**Est £80 - £120**

**379** Ernest Race for Isokon Plus, a 'Penguin Donkey' Mark II bookcase manufactured by Windmill Furniture, 21st Century, label to the underside

**Est £300 - £400**



381



381 After René Magritte, 'La Magi Noire', off-set lithograph, 27 x 20 inches

**Est £30 - £40**

382



382 After Robert Motherwell, 'Art Chicago', lithograph, Edition of 2000, 27 x 20 inches

**Est £20 - £30**

383

After Piet Mondrian, 'Windmill at Night', off-set lithograph, published for Gemeentemuseum Den Haag, 27.5 x 19.75 inches, together with 'Man at Night-Self Portrait' after Freud, a Robert Motherwell lithograph and an Atelier Mourlot poster (4)

**Est £40 - £60**

384

After Pablo Picasso, 'Guernica', off-set lithograph, 21 x 49 inches, together with 'Fifteen Pairs of Hands' after Bruce Nauman exhibition poster (2)

**Est £30 - £50**

385



385 After Salvador Dali, 'The Hallucinogenic Toreador', off-set lithograph, by Ernormous Art 2000, together with two others (3)

**Est £20 - £30**



386

After David Shrigley, Animal Series: 'He will only eat squid ink pasta', a giraffe, off-set lithograph printed in colours in 2020, Narayana Press

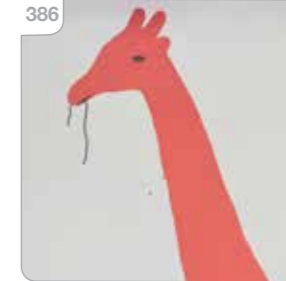
**Est £70 - £90**

387

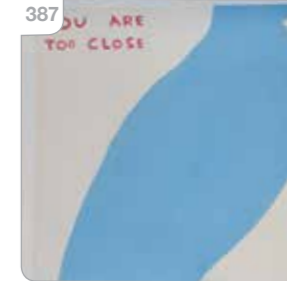
After David Shrigley, Animal Series: 'You are too close... Please move back' a bird, off-set lithograph printed in colours in 2020, Narayana Press

**Est £80 - £120**

386



387



388

After David Shrigley, Animal Series: 'Some of my best friends are pigs', off-set lithograph printed in colours in 2020, Narayana Press

**Est £100 - £150**

389

After David Shrigley, Animal Series: 'I will not fight', a bull, off-set lithograph printed in colours in 2020, Narayana Press

**Est £100 - £150**

**390** A 1960's Danish teak cabinet with two sliding doors over a slatted tier, on tapering legs, w. 80 cm, h. 80 cm  
**Est £80 - £120**

**391** A 1960's 'd-Scan' of Singapore teak sideboard with four moulded doors, on tapering legs, w. 155 cm  
**Est £150 - £200**



**392** A 1960's 'd-Scan' of Singapore teak sideboard with four glazed doors, on tapering legs, w. 155 cm  
**Est £100 - £150**

**393** A 1960/70's Danish teak sideboard, the two doors with moulded handles, on triangular tapering legs, w. 116 cm, h. 76 cm  
**Est £120 - £150**

**394** A White & Newton Ltd of Portsmouth teak 'Petersfield' sideboard with three doors, three drawers, scrolled back and oval legs, labelled, w. 208 cm, h. 73 cm  
**Est £400 - £600**



**395** After Le Corbusier, Charlotte Perriand and Pierre Jeanneret, a 1960/70's LC4-style chaise lounge, the chromed frame supporting a black seat and resting on a black static base \*SFP  
**Est £200 - £300**

**396** A pair of 1990's 'hand' lamps with globular shades together with a further contemporary table lamp in the form of a bulb (3)  
**Est £30 - £40**

**397** Jasper Morrison for Emeco, an American '1 Inch Reclaimed' chair in grey, with box  
**Est £100 - £150**

**398** Jasper Morrison for Emeco, an American '1 Inch Reclaimed' chair in green, with box  
**Est £100 - £150**





**399** A 1960/70's teak sideboard with two drawers and three drawers, on associated legs, w. 180 cm, h. 80 cm  
**Est £80 - £120**

**400** A 1960's German white laminate chest of drawers with a lift-surface by Interlubke, w. 64 cm, h. 119 cm  
**Est £60 - £80**

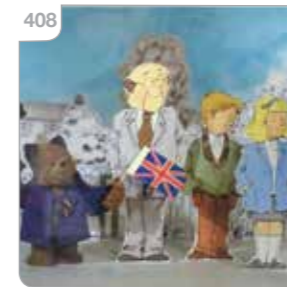
**401** Arne Jacobsen for Fritz Hansen, a 1995 Danish 'Serie 7' bentwood stacking chair, labelled  
**Est £40 - £60**

**402** Ettore Sottsass Associati for Segis, a 2005 'Trono' chair in orange, moulded markings  
**Est £300 - £400**

**403** Ettore Sottsass Associati for Segis, a 2005 'Trono' chair in transparent, moulded markings  
**Est £300 - £400**

**404** A Thonet Model 209 bentwood armchair with a bergere seat, sticker to underside  
**Est £150 - £200**

**405** A B34 side chair, the chromed tubular frame supporting a black slung seat and back, designed by Mart Stam  
**Est £60 - £100**



**408**

**408** Art You Grew Up With Ltd., under license from Paddington & Co. Ltd, 'Paddington Parade', limited edition chromatic print, numbered 2/100, image 25 x 38 cm  
**Est £40 - £60**

**406** Sir Peter Blake RA (b. 1932), 'I Love You', signed and numbered 162/175, silkscreen, image 26 x 121 cm, total 48 x 144 cm  
**Est £2200 - £2500**



**409**

**407** After Roy Lichtenstein (American, 1923-1997), 'Pop Art Masterpiece 1962, Royal Academy of Arts', lithographic poster, image 50 x 50 cm, together with 'I know how you must feel, Brad' (2)  
**Est £150 - £200**

**409** After Le Corbusier, Pierre Jeanneret and Charlotte Perriand, a pair of three seater black 'LC3' style sofas with chromed frames \*SFP  
**Est £300 - £400**

## Hammer Prices - Bedford, February 2024 Sale

1	£300	37	£170	74	£65	109	£16	145	£65	183	£440	226	£10	253	£240	281	£30
2	£140	38	£150	76	£75	110	£20	146	£45	185	£50	227	£75	255	£100	282	£60
5	£95	39	£70	77	£50	111	£260	147	£70	186	£20	228	£70	256	£80	283	£30
6	£100	40	£80	78	£280	112	£400	148	£65	187	£20	229	£40	257	£120	284	£50
7	£65	41	£190	79	£140	113	£55	149	£30	188	£120	231	£55	258	£60	285	£55
8	£30	42	£26	80	£75	114	£30	150	£80	189	£75	232	£30	259	£18	288	£35
9	£100	43	£26	81	£750	115	£26	154	£20	190	£30	233	£160	260	£120	292	£460
10	£280	44	£100	82	£190	116	£65	155	£55	192	£80	234	£360	261	£100	293	£280
11	£200	46	£60	84	£400	117	£40	156	£28	193	£55	235	£600	262	£95	295	£45
12	£180	47	£65	85	£150	118	£26	157	£22	197	£280	236	£400	265	£280	296	£100
13	£800	48	£55	86	£180	120	£26	158	£22	198	£950	237	£700	267	£45		
14	£120	49	£20	87	£110	121	£460	159	£60	199	£300	238	£550	269	£50		
15	£50	50	£50	88	£85	122	£220	160	£20	200	£170	239	£120	270	£60		
16	£360	51	£65	89	£30	123	£60	161	£30	202	£35	240	£240	271	£85		
17	£60	53	£20	90	£60	124	£95	163	£24	203	£35	241	£400	272	£24		
18	£150	54	£55	91	£90	125	£220	164	£55	204	£85	243	£120	273	£30		
19	£65	55	£26	93	£80	126	£260	165	£30	213	£600	244	£160	274	£80		
20	£40	56	£35	94	£55	127	£220	166	£30	215	£160	245	£80	275	£55		
22	£70	60	£40	95	£130	128	£320	167	£28	216	£45	246	£40	276	£65		
23	£600	61	£500	96	£20	129	£320	168	£20	220	£650	247	£55	277	£40		
24	£950	62	£360	97	£20	130	£900	169	£80	221	£600	248	£95	278	£75		
25	£2200	63	£420	99	£75	134	£26	170	£80	222	£90	249	£130				
27	£35	64	£100	100	£110	135	£35	172	£26	223	£100	250	£60				
28	£26	65	£110	101	£50	136	£30	173	£60	224	£120	251	£40				
30	£45	66	£40	102	£28	137	£70	174	£15	225	£10	252	£600				
31	£160	67	£100	103	£26	138	£35	175	£16								
32	£90	68	£50	104	£50	139	£50	177	£35								
33	£28	70	£35	105	£22	140	£35	178	£35								
34	£360	71	£40	106	£180	141	£45	180	£22								
35	£75	72	£35	107	£320	143	£50	181	£42								
36	£80	73	£95	108	£80	144	£50	182	£60								

## Next Sale

Bedford Auction Centre  
Friday 16th August 2024 | Commencing at 10.30am

Visit our website for full details  
[www.peacockauction.co.uk](http://www.peacockauction.co.uk)

**W&H PEACOCK**  
AUCTIONEERS & VALUERS

# 23rd May 2024

*We are now inviting auction entries for our forthcoming sale of  
Antiques, Furniture & Jewellery & Watches.*

## COMPLIMENTARY VALUATION ADVICE

PLEASE CONTACT US TO MAKE AN APPOINTMENT

**Bedford Auction Centre**  
Eastcotts Park, Wallis Way, Bedford, MK42 0PE  
01234 266 366 [info@peacockauction.co.uk](mailto:info@peacockauction.co.uk)

**peacockauction.co.uk**

A collection of jewelry including pearls, diamonds, and watches on a textured background. The items are arranged in a way that suggests a high-quality auction. The background is a light-colored, textured fabric.

# Jewellery, Coins & Watches

TO BE SOLD BY LIVE AUCTION

Friday 7th June 2024

Commencing after 2pm

Viewing:

Friday 31st May 9am to 8pm

Saturday 1st June 9am to 1pm

Thursday 6th June 9am to 5pm

Morning of sale from 9am to 10:30am

**Bedford Auction Centre**

Wallis Way, Bedford, Bedfordshire, MK42 0PE  
01234 266 366 or [info@peacockauction.co.uk](mailto:info@peacockauction.co.uk)

[peacockauction.co.uk](http://peacockauction.co.uk)